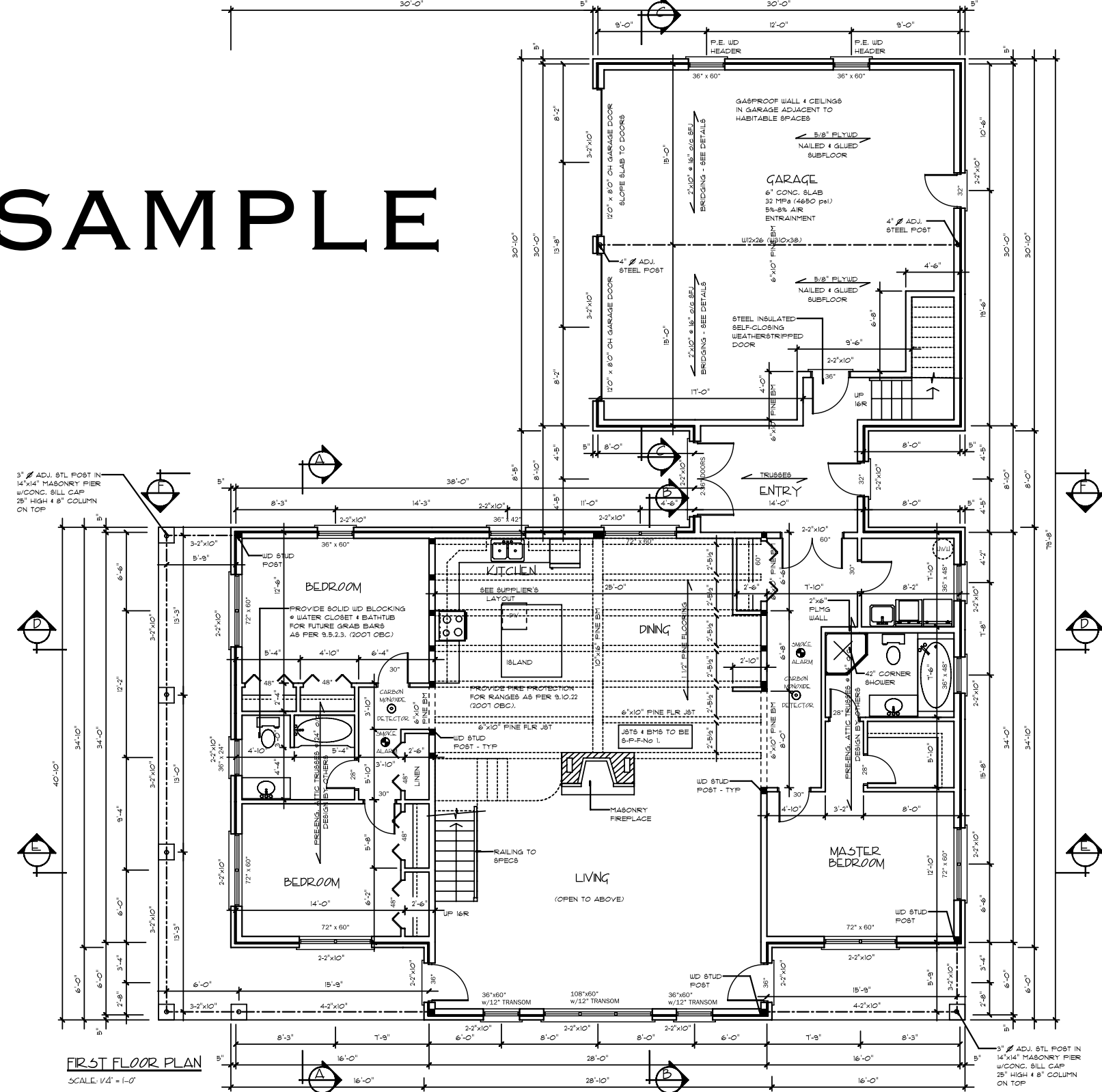


SAMPLE



FIRST FLOOR PLAN
SCALE: 1/4" = 1'-0"

ENERGY EFFICIENCY DESIGN

THE ENERGY EFFICIENCY DESIGN IS BASED ON THE FOLLOWING:
SPACE HEATING UNIT TO BE HIGH EFFICIENCY NATURAL GAS OR PROPANE FURNACE.

MIN. RSI (R) VALUE	
CEILING w/ATTIC SPACE:	8.81 (R50)
CEILING w/o ATTIC:	5.46 (R31)
EXPOSED FLOOR:	5.46 (R31)
WALLS ABV. GRADE:	3.81 (R22)
WALLS BELOW GRADE:	2.11 (R12)

WINDOWS & DOORS: 1.6 MAX. 'U' VALUE.
SKYLIGHTS: or min. 25 ENERGY RATING, 2.8 MAX. 'U' VALUE.
SPACE HTG. EQUIPMENT MIN. AFUE: 94%
HRV MIN. EFFICIENCY: 60%
DOMESTIC HOT WATER HEATER MIN. EF: 0.67

REFER TO COMPLIANCE PACKAGE 'J' - TABLE 2.1.1.2.A - 8B12, 2006 OBC.
ANY CHANGE TO THE SPACE HTG. EQUIPMENT, HRV OR DOMESTIC HOT WATER HEATER SHALL REQUIRE REDESIGN OF INSULATION 'R' VALUES.

WINDOW/SKYLIGHT/GLASS DOORS

GROSS WALL AREA: 3232.3 sq. ft.
GROSS WINDOW AREA: 586.5 sq. ft.
TOTAL % OF WINDOWS: 18.1 %

- PRE-ENG WD HEADERS/BEAMS TO BE TIMBERSTRAND OR PARALLAM BEAM DESIGN BY OTHERS
- WINDOW SIZES ARE APPROXIMATE CONFIRM W/ WINDOW MANUFACTURER FOR R50.
- ALL DOORS TO HAVE 6'8" HT. UNLESS OTHERWISE NOTED
- MECHANICAL VENTILATION TO BE DESIGNED BY OTHERS. IN ACCORDANCE W/ THE ONTARIO BUILDING CODE & O. REG 305/03 & ANY SUBSEQUENT AMENDMENTS

STEEL POST SCHEDULE

STEEL POST/COLUMN TO HAVE A LOAD RATING NOT EXCEEDING THE STATED SIZE.
3" ADJ. ST. POST - 8000 LB
4" ADJ. ST. POST - 18000 LB
4" STL COLUMN - 30000 LB
STRUCT'L COLUMN - TO BE DESIGNED BY OTHERS
SIZE OF STEEL POST/COLUMNS MAY VARY, AS LONG AS LOAD RATING REQUIREMENTS ARE MET.

ENGINEERED WD BEAM ABV. KITCHEN/DINING
DESIGNED BY: LEN MANSION
P. ENG - CIVIL & STRUCTURES BOB CAYGEOON, ONTARIO

RESIDENTIAL HOME DESIGNS
New Concepts in Additions & Renovations
Mark Barnetson
Residential Design Consultant 705-328-1838

ONTARIO REGISTERED DESIGNER
MARK BARNETSON
B01 21867

MAXSON
377 LYNX LAKE RD., HUNTSVILLE
SCALE: AS NOTED DRAWN BY: MB
DATE ISSUED: NOVEMBER 2013 - FOR CONSTRUCTION
2450 sq ft BUNGALOW w/ LOFT
JOB #: 13-D-177 DWG #: A2